

General thematic outlook on ENI CBC projects and programmes

December 2022



Funded by the
European Union



Technical Support to the Imple-
mentation and Management of ENI
CBC programmes, implemented
by a consortium led by Particip

particip



Introduction

This publication provides an overview on the main data of the more than 900 projects financed through cross-border cooperation programmes under the 2014-2020 European Neighbourhood Instrument (ENI CBC)*.

These projects have been the result of a selection of approximately 5.000 proposals screened through almost 50 calls launched by fifteen programmes. Actions involve over 3.600 organisations operating on both sides of the external European border and mobilize 1.105 M€ of total budget.

The document is organised in a quite simple way, presenting projects in four thematic clusters: environment, people-to-people cooperation, economic development and cross-border infrastructures. Each of the following pages answers a specific question, using little text and lots of graphs, based on data available in early September 2022. It is an attempt to show in a structured way the richness of the cross-border cooperation initiatives in the regions along the external borders of the Union, contributing with their efforts to build a greener, more social and more cohesive Europe and its neighbourhood.

This first general overview will be followed by more specific analyses. We hope that these pages will stimulate your curiosity to learn more about neighbourhood cross-border cooperation.

Enjoy the reading!

The TESIM team.

* Within this document, the term “cross-border” applies to all types of programmes: land borders, sea-crossings and sea basins. This publication considers the fifteen 2014-2020 ENI CBC programmes, including the eight programmes directly concerned by the suspension of the financing agreements with Russia and Belarus following the Russian aggression on Ukraine of February 2022. Despite this suspension, the beneficiaries from the Member States and Norway continue implementing their parts of the projects.



Summary

The ENI CBC projects at a glance

Programmes	5	Which programme is operating in each geographical area?
	6	How are the projects distributed within the programmes?
Projects	7	How are projects distributed through the thematic clusters?
	8	How are projects distributed across the geographical areas?
	9	Which types of projects are run under the ENI CBC programmes?
Budget	10	How is the budget distributed within the thematic clusters?
	11	How is the budget distributed across the geographical areas?
	12	Which is the average budget of the different thematic clusters?
	13	How are funds allocated and distributed?
Territories	14	In which territories operate more ENI CBC projects?
	15	How are lead partners distributed within territories?
	16	Which territories have more partners active in promoting environment?
	17	Which territories have more partners active in promoting economic development?
	18	Which territories have more partners active in promoting people-to-people cooperation?
	19	Which territories have more partners active in promoting cross-border infrastructures?
Duration	20	Which is the duration of the projects?
	21	Which is the duration of the projects through the thematic clusters?
Partners	22	Which is the number of partners involved in the projects?

Youth involvement

24	How much is the Youth involved in the projects?
25	Where is the Youth more involved across geographical areas?
26	Where is the Youth more involved across programmes?
27	Where is the Youth more involved through the thematic clusters?

From ENI CBC to Interreg NEXT

29	How do ENI CBC projects fit into Interreg NEXT?
-----------	---

The ENI CBC projects at a glance

Programmes

Which programme is operating in each geographical area?

Projects are distributed within fifteen ENI CBC programmes

Northern and Baltic programmes*

1. **Kolarctic**
www.kolarctic.info
2. **Karelia**
www.kareliacbc.fi
3. **South-East Finland -Russia**
www.sefrcbc.fi
- Baltic**
4. **Estonia-Russia**
www.estoniarussia.eu
5. **Latvia-Russia**
www.latruscbc.eu
6. **Latvia-Lithuania -Belarus**
www.eni-cbc.eu/llb
7. **Lithuania-Russia**
www.eni-cbc.eu/lr
8. **Poland-Russia**
www.plru.eu

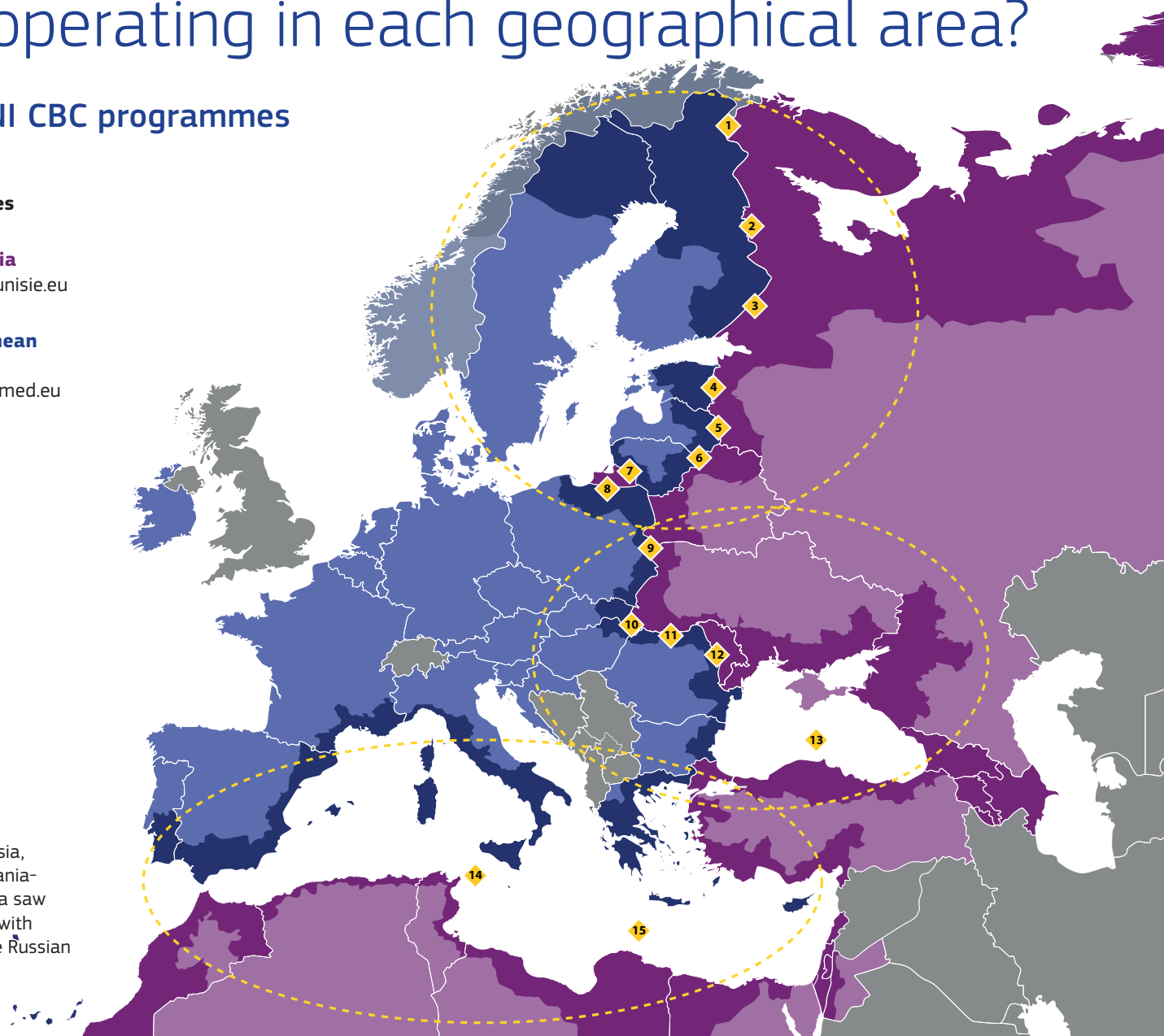
Central and Eastern European programmes

9. **Poland- Belarus-Ukraine**
www.pbu2020.eu
10. **Hungary- Slovakia-Romania -Ukraine**
www.huskroua-cbc.eu
11. **Romania-Ukraine**
www.ro-ua.net
12. **Romania- Republic of Moldova**
www.ro-md.net
13. **Black Sea Basin**
www.blacksea-cbc.net

Southern programmes

14. **Italy-Tunisia**
www.italietunisie.eu
15. **Mediterranean Sea Basin**
www.enicbcmmed.eu

* Kolarctic, Karelia, South-East Finland-Russia, Estonia-Russia, Latvia-Russia, Latvia-Lithuania-Belarus, Lithuania-Russia and Poland-Russia saw the suspension of the financing agreements with Russia and Belarus as a consequence of the Russian aggression on Ukraine of February 2022.

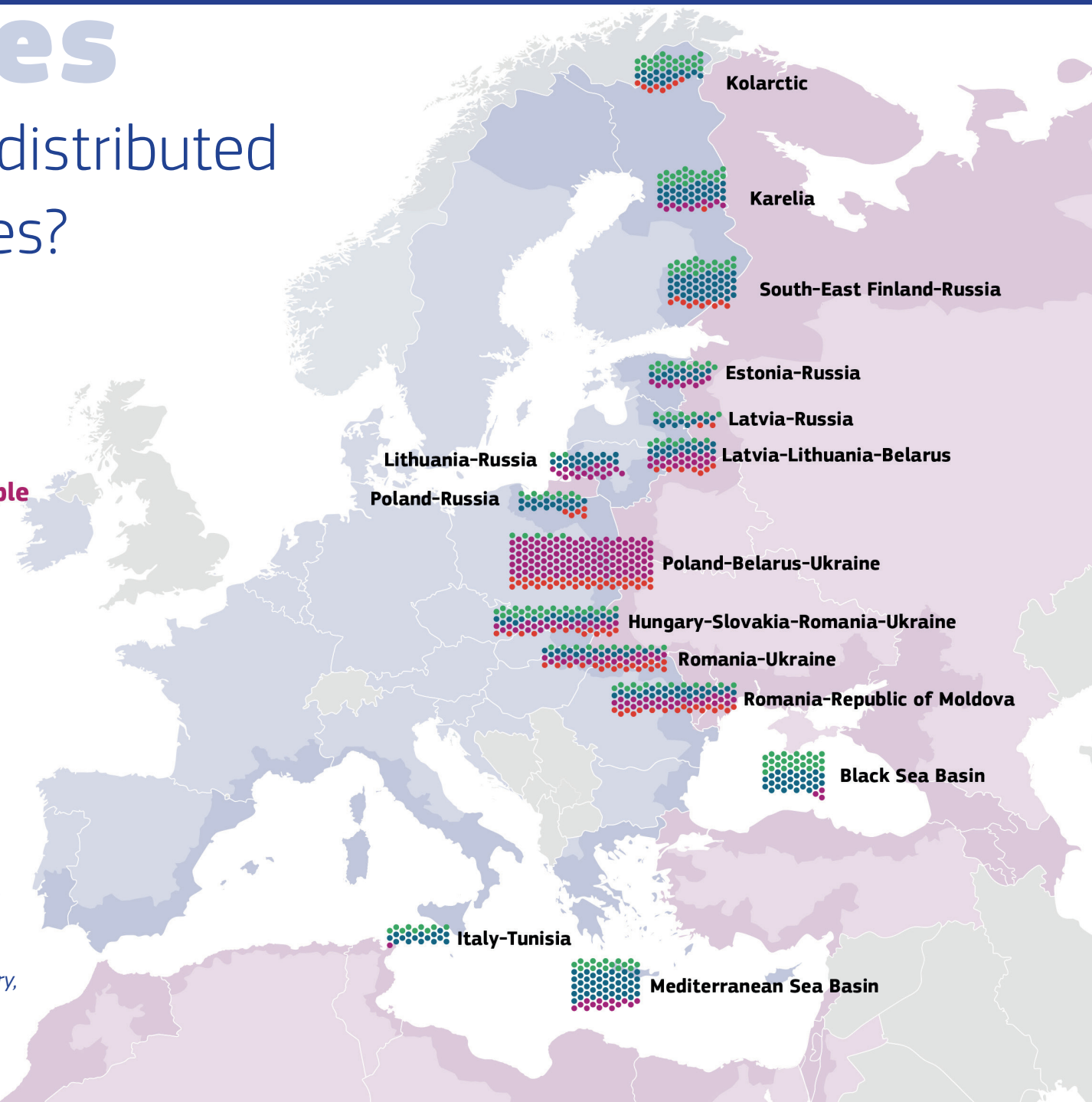


Programmes

How are the projects distributed within the programmes?

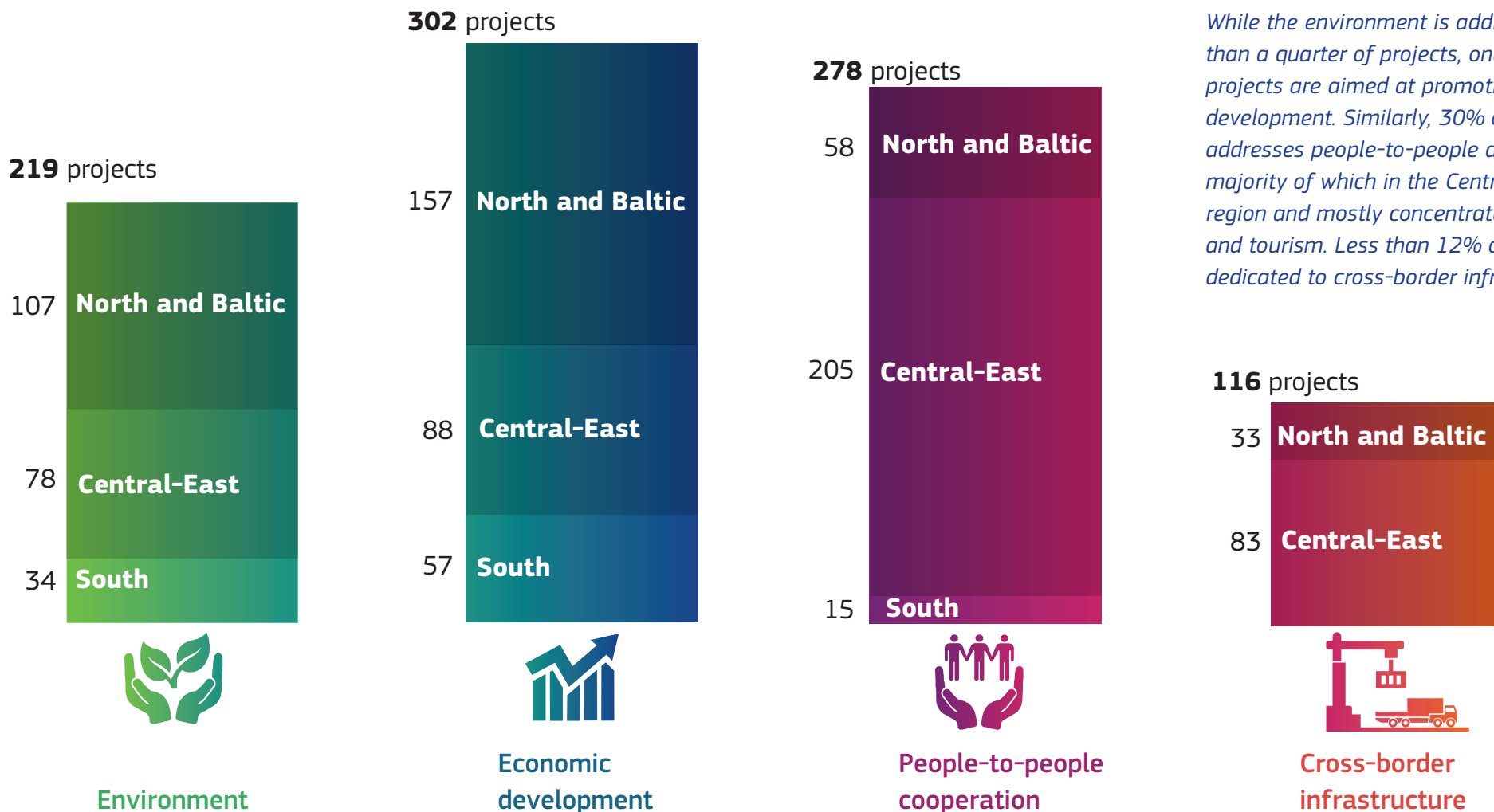
-  **Environment**
-  **Economic development**
-  **People-to-people cooperation**
-  **Cross-border infrastructure**

While projects addressing economic development are distributed in all programmes except for Poland-Belarus-Ukraine, projects addressing cross-border infrastructures are mainly concentrated in the Central-Eastern programmes, except for the Black Sea Basin Programme. The Southern programmes, with a prevalence of sea borders, have no projects addressing cross-border infrastructures. The Poland-Belarus-Ukraine Programme stands out for the large number of projects within the people-to-people category, mostly micro-projects that address culture and education.



Projects

How are projects distributed through the thematic clusters?



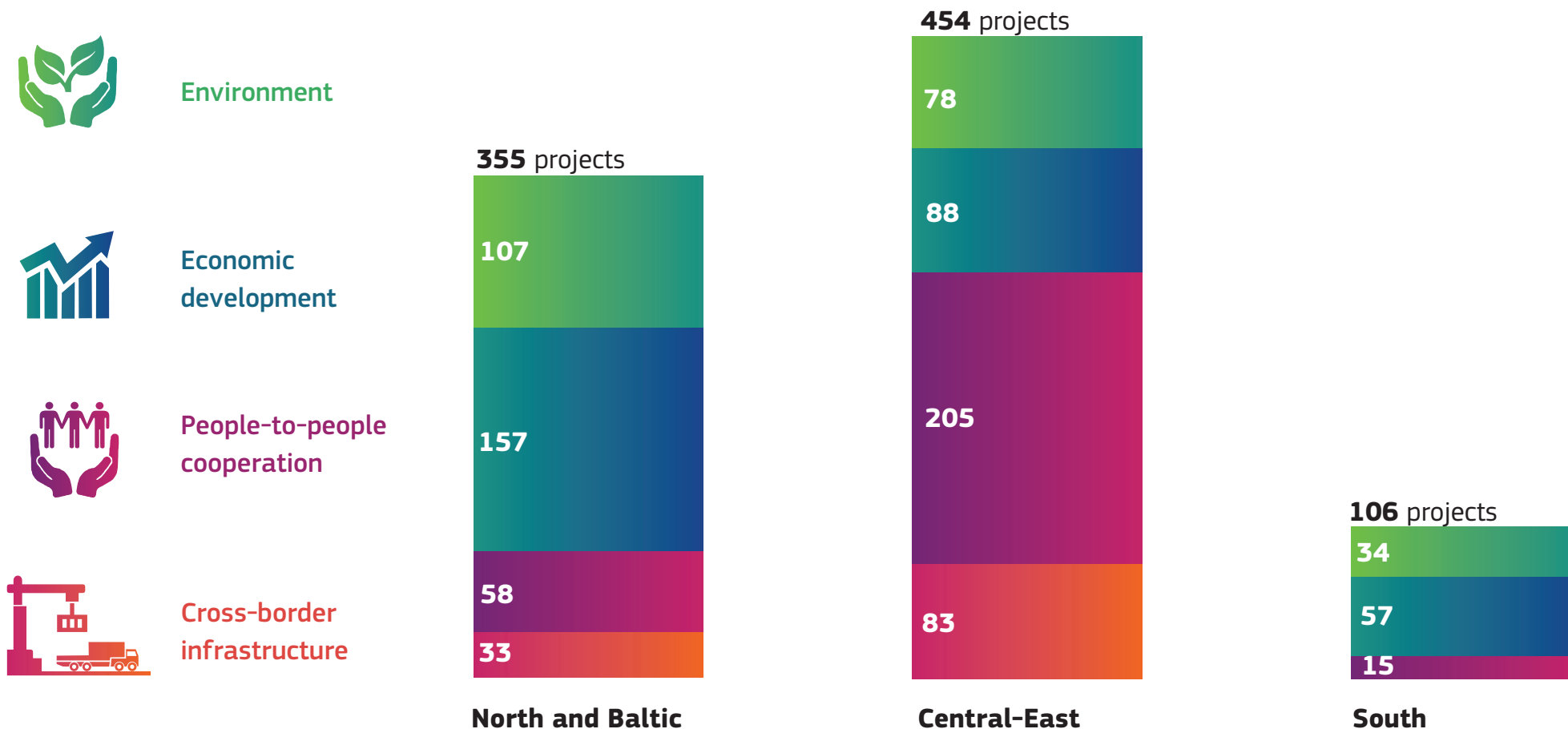
While the environment is addressed by less than a quarter of projects, one third of all projects are aimed at promoting economic development. Similarly, 30% of the projects addresses people-to-people actions, the majority of which in the Central-East region and mostly concentrated in culture and tourism. Less than 12% of projects is dedicated to cross-border infrastructures.

By September 2022, 26 projects have been suspended and terminated. This includes 16 projects from Poland-Belarus-Ukraine, 3 from Karelia, 3 from South-East Finland- Russia, 2 from Estonia-Russia, 1 from Kolarctic and 1 from Latvia-Lithuania-Russia.

Projects

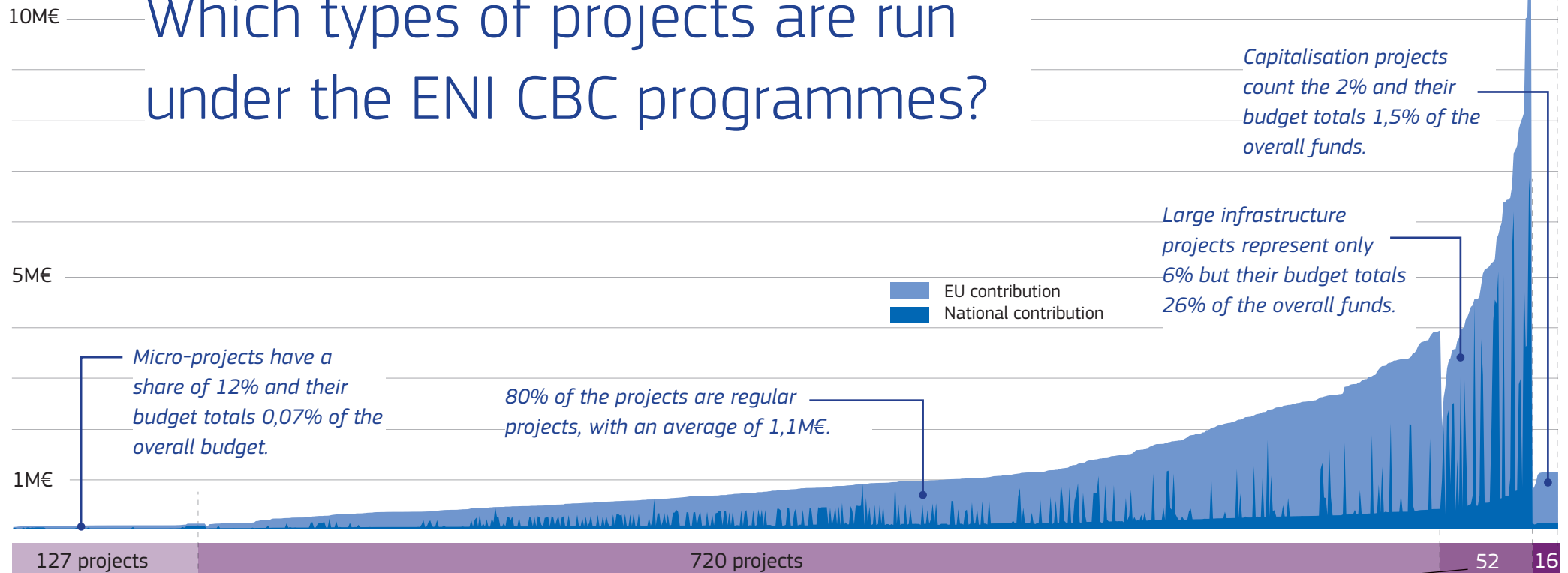
How are projects distributed across the geographical areas?

Thematic clusters are differently distributed across geographical areas. While three quarters of projects in the North and Baltic focus on economic development and on the environment, half of the projects in the Central-East are mainly people-to-people projects. The South counts just 12% of the whole ENI CBC projects, most of which in the field of economic development.



Projects

Which types of projects are run under the ENI CBC programmes?



Micro-projects (12%) are small-scale projects which provide a short-term response (typically one year) requiring a smaller budget (under 80.000€ – thresholds may differ). They are selected through dedicated calls with simplified procedures for selection, management and implementation, including simplified cost options (lump sums).

Average budget = **64.650€**

Regular projects (80%) are the majority of ENI CBC's interventions, with a budget from 50.000€ to over 4 M€, but which normally ranges from 0,5 to 2,5 M€. Under this category, programmes include “standard projects”, “strategic projects”, “soft projects” and “hard projects”

Average budget = **1,1 M€**

Large infrastructure projects (LIP) (6%), which are often selected using a direct award procedure, have been foreseen in eleven of the fifteen ENI CBC programmes. They include hard construction and pilot installations work and are normally large-scale projects from 2 to over 12M€.

Average budget = **5,5M€**

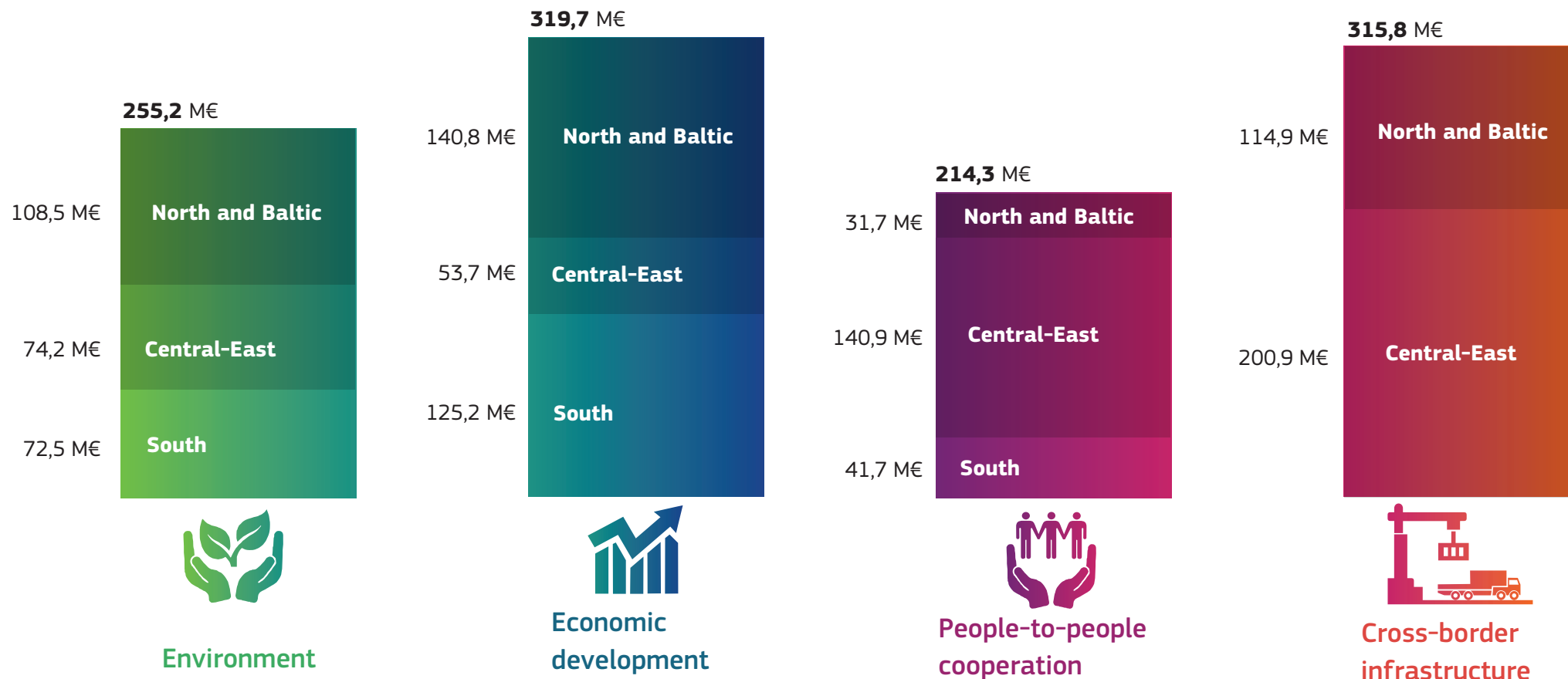
Capitalisation projects (2%) are those projects gathering and building upon results of previous programmes / projects. They are normally promoted through specific calls for proposals.

Average budget = **1,0M€**

Budget

How is the budget distributed through the thematic clusters?

More than half of the budget is equally distributed between cross-border infrastructures and economic development: 28,9% and 28,6% of total funds respectively. Environment uses less than one quarter of the overall budget. Despite the large number of projects, the people-to-people cluster uses less than 20% of the overall budget.



Project budget includes EU and national co-financing.

Budget

How is the budget distributed across the geographical areas?

Projects in the North and Baltic region are more concentrated in economic development, environment and cross-border infrastructure with only 8% of the budget devoted to people-to-people actions.

In the Central-East region 43% of the budget is dedicated to cross-border infrastructures.

Projects in the South use more than half of the budget on economic development actions.



Environment



Economic development

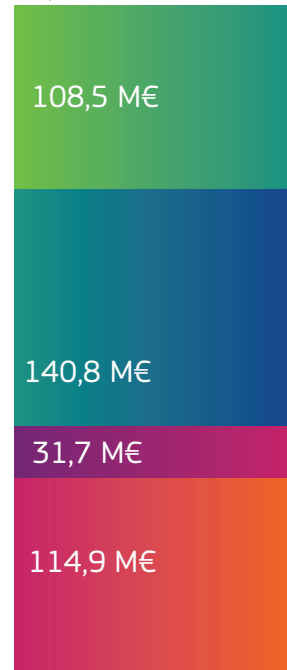


People-to-people cooperation



Cross-border infrastructure

395,9 M€



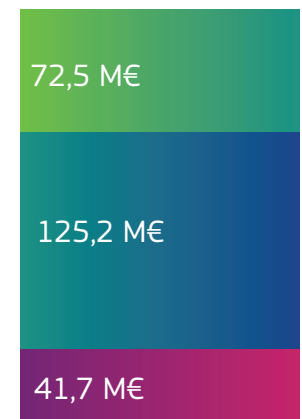
North and Baltic

469,7 M€



Central-East

239,4 M€



South

Project budget includes EU and national co-financing.

Budget

Which is the average budget of the different thematic clusters?

The average budget in ENI CBC goes from 0,8 M€ for people-to-people projects to 2,7 M€ for projects addressing cross-border infrastructures.

The average budget for all clusters except cross-borders infrastructures is almost equal, though the average in environment is a bit higher compared to the others.

Cross-border infrastructure projects show the broader spectrum of budget, ranging from 100.000 € to more than 12 M€.

The average budget of projects under the cross-border infrastructure cluster is twice, three times higher than in other clusters, due to the nature of these projects, where a lot of infrastructural works are demanded.

10M€

5M€

1M€

average 1,2 M€

average 1,1 M€

average 0,8 M€

average 2,7 M€

Environment

Economic development

People-to-people cooperation

Cross-border infrastructure

Project budget includes EU and national co-financing.

Budget

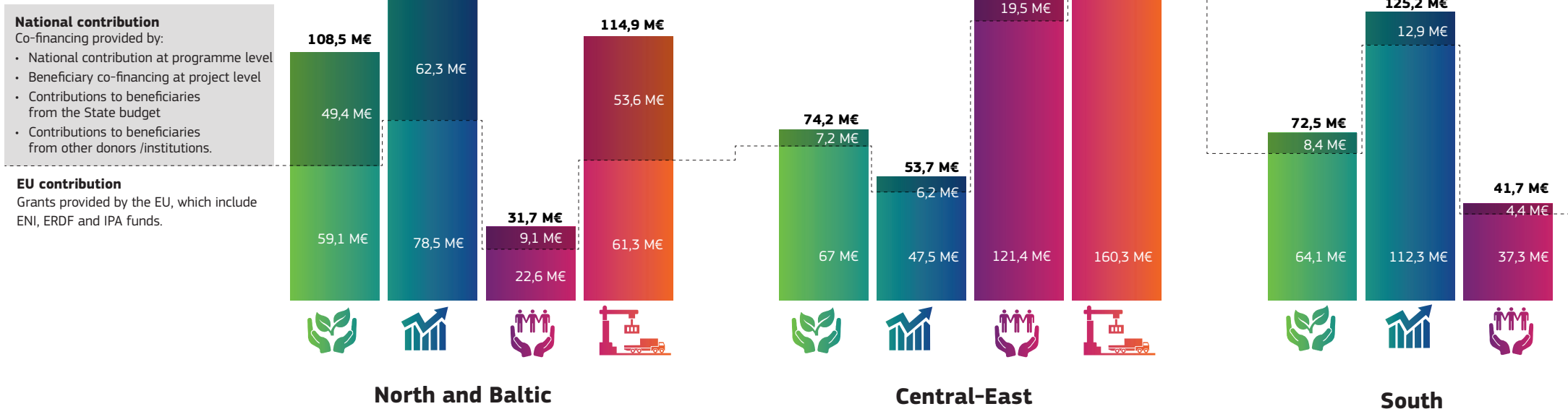
How are funds allocated and distributed?

In Northern programmes national contribution is higher than in other programmes, with an average of 56% of EU funds and 44% of national contribution.

In Central-East and Southern programmes national contribution drops to 14% as average, varying from 10% (for environment) to 20% (for cross-border infrastructures) of the project budget.

In cross-border infrastructures the percentage of national contribution tends to increase, reaching 20,2% for Central-East programmes and up to 46,6% for the programmes from the Nordic and Baltic region.

The percentage of EU funds in the ENI CBC projects represents 75,3% of the total budget.

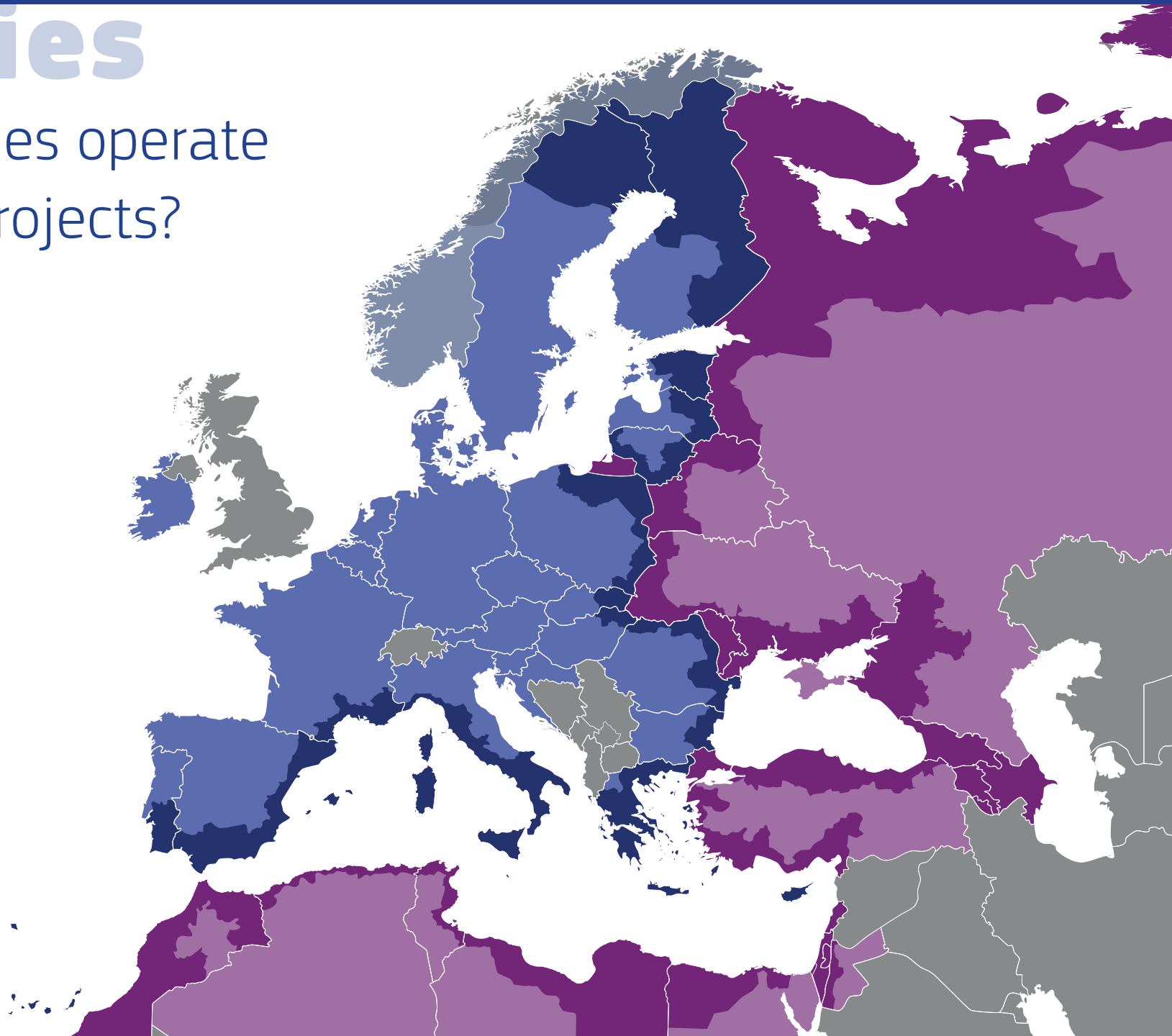


Territories

In which territories operate more ENI CBC projects?

The following maps use the NUTS classification (Nomenclature of territorial units for statistics), a hierarchical system for dividing up the territory of the EU. The data analyses therein take into consideration the NUTS 2 scale, corresponding to basic European regions, or equivalent, for the application of regional policies.

Take a moment to browse the maps on the following pages zooming in on the different regions, to find out where cross-border cooperation takes place.



Territories

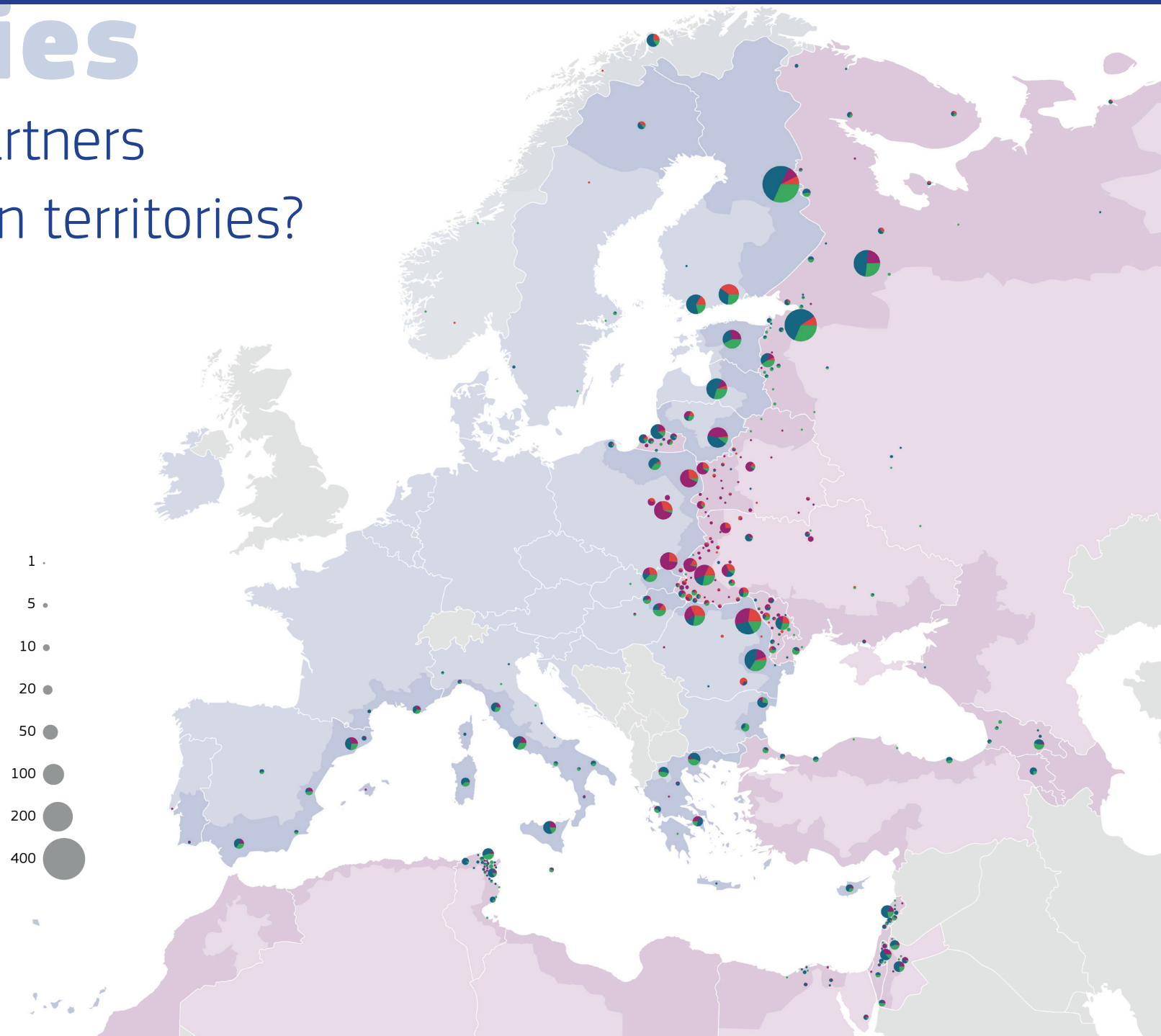
How are lead partners distributed within territories?

The cross-border territories with the highest number of lead partners are located in Romania, Finland and Poland. More than half of the lead partners of all ENI CBC projects are concentrated in these three countries.

At NUTS 2 level, the regions with over 25 lead partners are the North-East and North-West of Romania, Latvija, Estonia, Lubelskie and Podkarpackie in Poland and Etelä-Suomi in Finland.

More than 18% of lead partners comes from NUTS 2 regions in Ukraine, especially from Luts'kyi, Chernivets'ka and Tysmenyts'kyi.

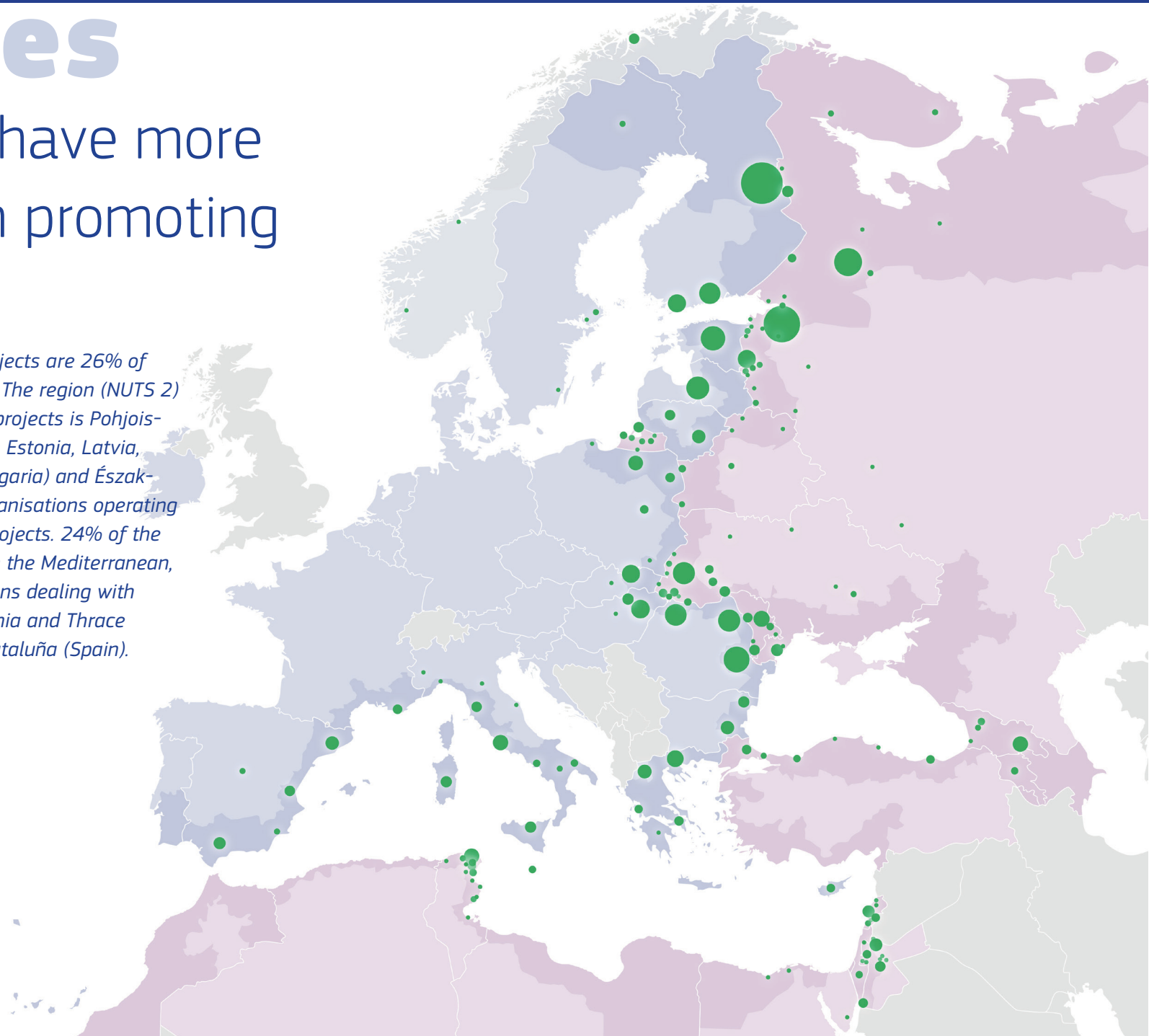
In the South, where the number of projects is significantly lower, the NUTS 2 that express the highest number of lead partners (at least six) are Sicily (Italy), Cataluña (Spain), Lazio (Italy), Tunis Bab Bhar (Tunisia), Andalucía (Spain) and East Macedonia, Thrace (Greece).



Territories

Which territories have more partners active in promoting environment?

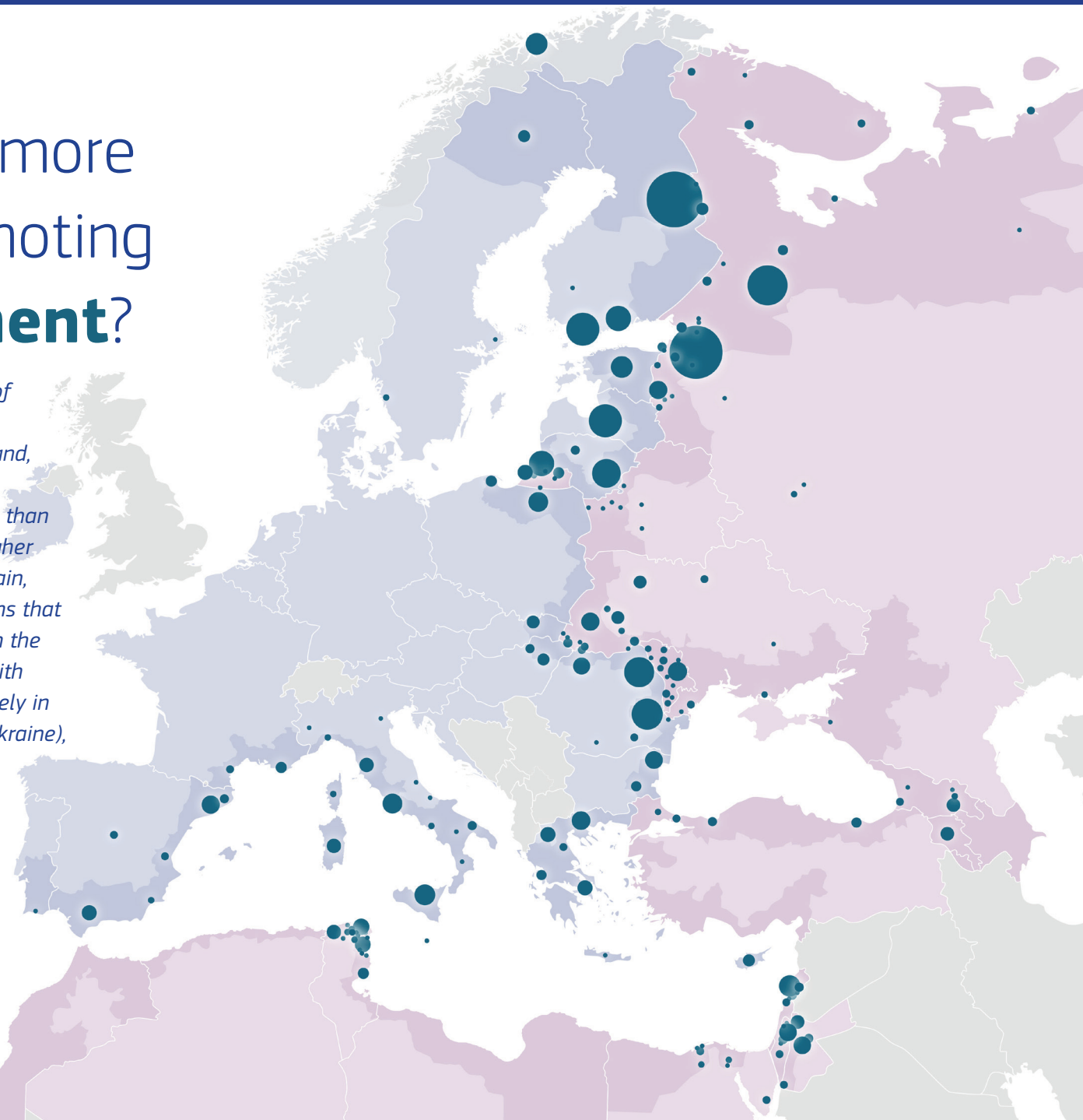
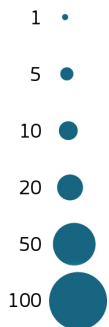
The organisations involved in environmental projects are 26% of the whole partners involved in CBC cooperation. The region (NUTS 2) with the highest participation in environmental projects is Pohjois-Ja Itä-Suomi in Finland, followed by territories in Estonia, Latvia, Romania, Russia and Ukraine. Yugoiztochen (Bulgaria) and Észak-Alföld (Hungary) have more than half of the organisations operating in their territories dealing with environmental projects. 24% of the organisations involved in the environment are in the Mediterranean, with regions counting more than ten organisations dealing with environment, such as Central and West Makedonia and Thrace (Greece), Lazio (Italy), Bab Bhar (Tunisia) and Cataluña (Spain).



Territories

Which territories have more partners active in promoting economic development?

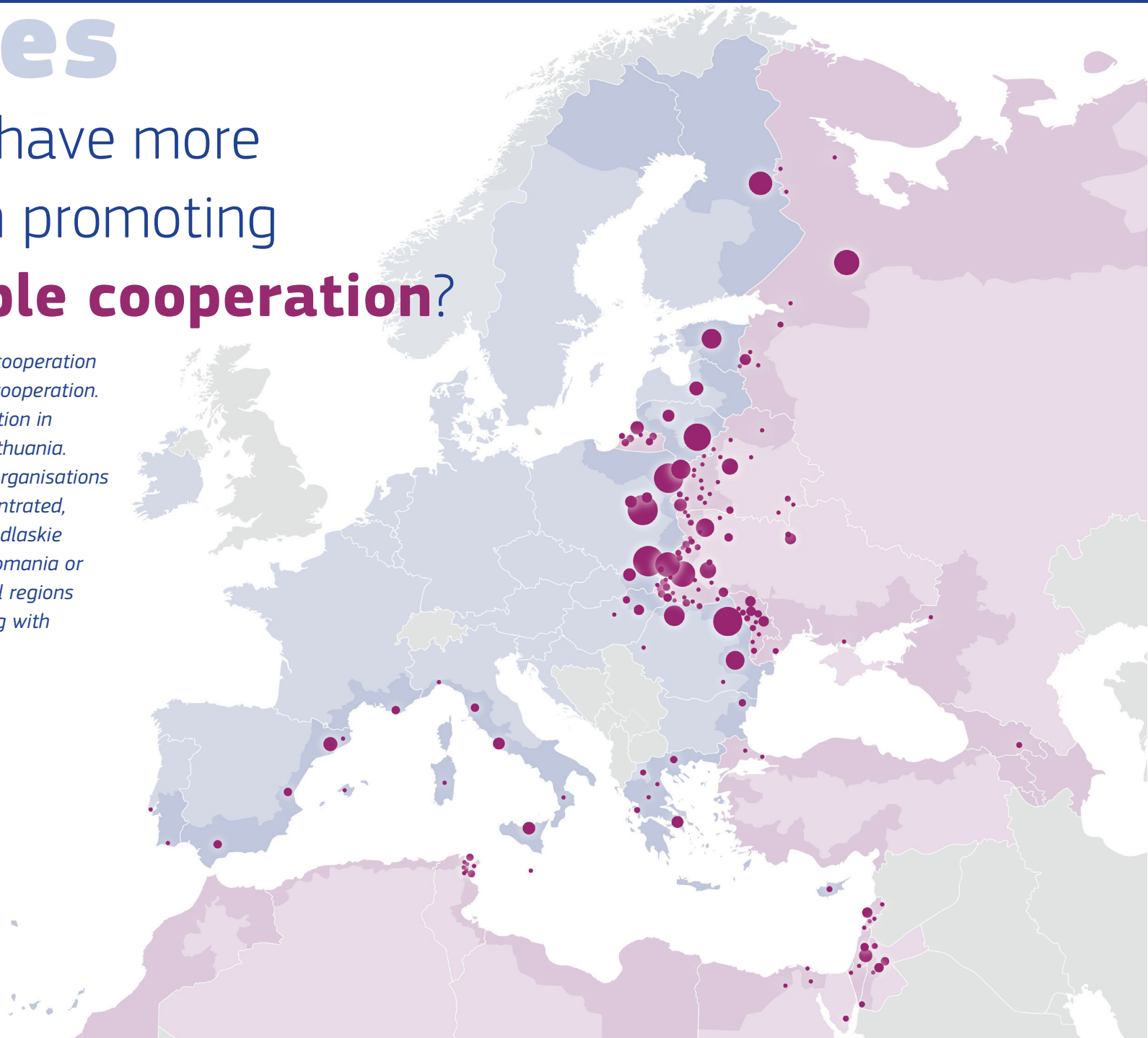
The organisations involved in economic development are 38% of the whole partners involved in CBC cooperation. Apart from the concentration of partners in several Northern regions from Finland, Latvia and the Russian Federation, in proportion, the economic development is more often addressed in the South, where more than half of the organisations dealing in the sector are located. A higher concentration can be appreciated in regions like Cataluña in Spain, around Beirut in Lebanon or in Italy, il Lazio and Sicily, all regions that counts more than twenty organisations involved in the sector. In the East, Poland, Ukraine, Bulgaria and Romania host the regions with more concentration, with more than ten organisations respectively in Warmińsko-Mazurskie (Poland), Uzhhorods'kyi and Izmail'ska (Ukraine), Severoiztochen (Bulgaria) and Nord-Vest (Romania).



Territories

Which territories have more partners active in promoting **people-to-people cooperation?**

The organisations involved in people-to-people cooperation are 24% of the whole partners involved in CBC cooperation. The territory (NUTS 2) with the highest participation in people-to-people actions is the South-East of Lithuania. Apart from that, it is in the East where 55% of organisations dealing with people-to-people actions are concentrated, in territories such as Podkarpackie, Lubelskie, Podlaskie in Poland, Nord-Est, Nord-Vest and Sud-Est in Romania or Uzhhorods'kyi and Pustomytivs'kyi in Ukraine, all regions counting more than twenty organisations dealing with people-to-people and social inclusion projects.



Territories

Which territories have more partners active in promoting **cross-border infrastructures?**

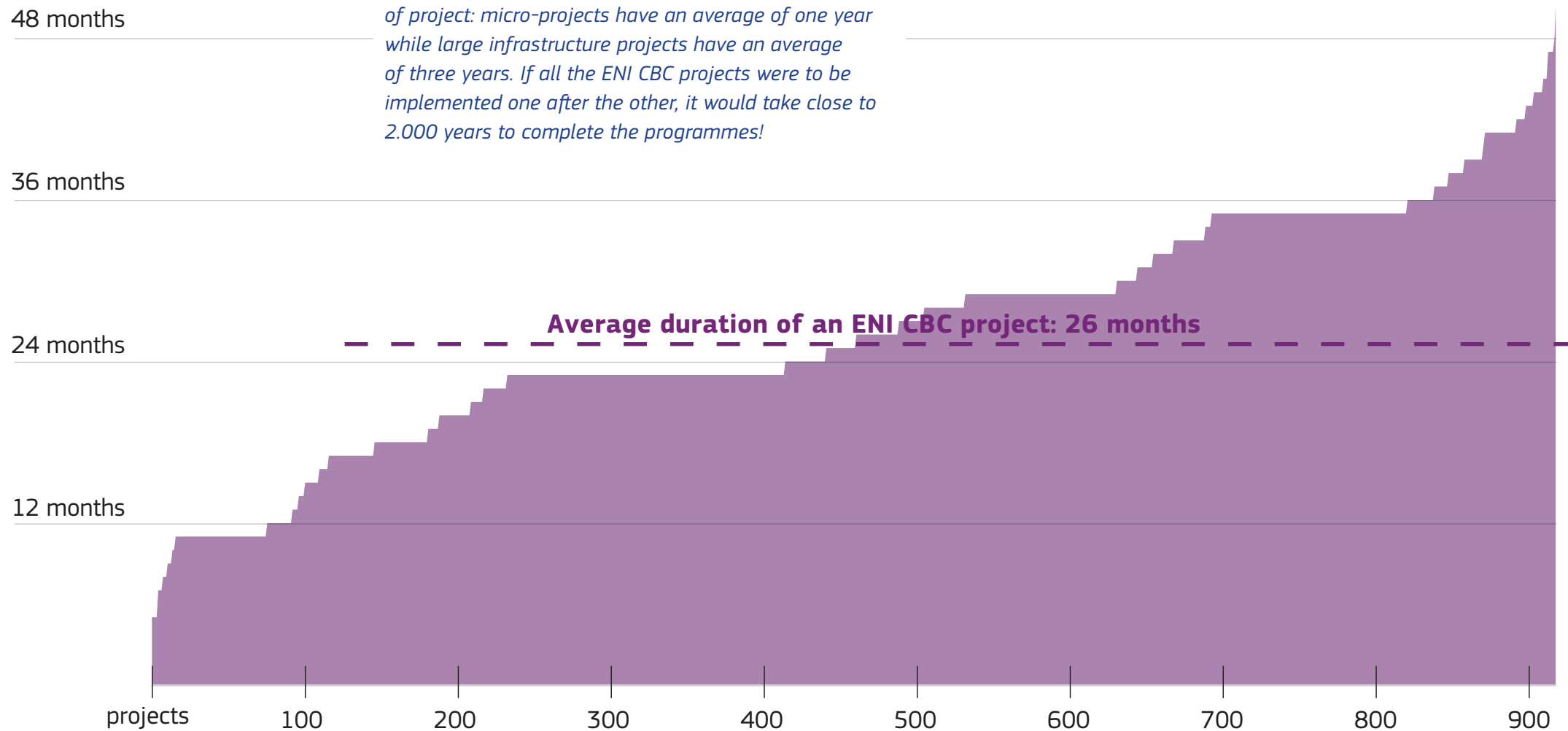
The organisations involved in cross-border infrastructures are less than 12% of the whole partners involved in CBC cooperation. The South, the Mediterranean regions and more generally the territories with sea borders are practically not involved in the sector. The organisations more involved by cross-border infrastructures are located in the North, is Helsinki-Uusimaa and Pohjois- ja Itä-Suomi in Finland, or in the East in the Nord-Est and Nord-Vest of Romania or in Poland, in Lubelskie or Podlaskie.



Duration

Which is the duration of the projects?

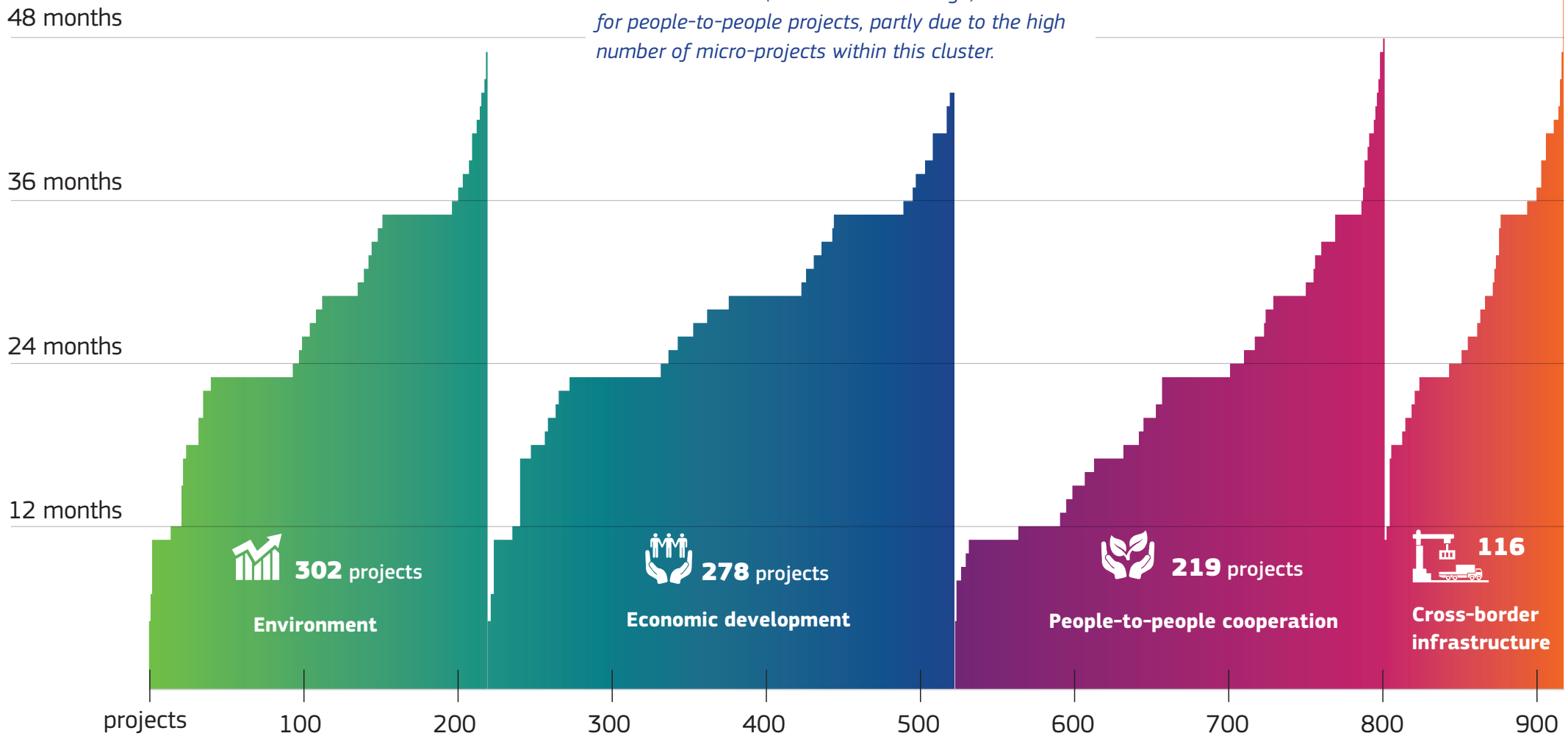
The projects that have a duration beyond 36 months are 8,6% of the total, while projects shorter than one year are 1,7%. The average varies according to the type of project: micro-projects have an average of one year while large infrastructure projects have an average of three years. If all the ENI CBC projects were to be implemented one after the other, it would take close to 2.000 years to complete the programmes!



Duration

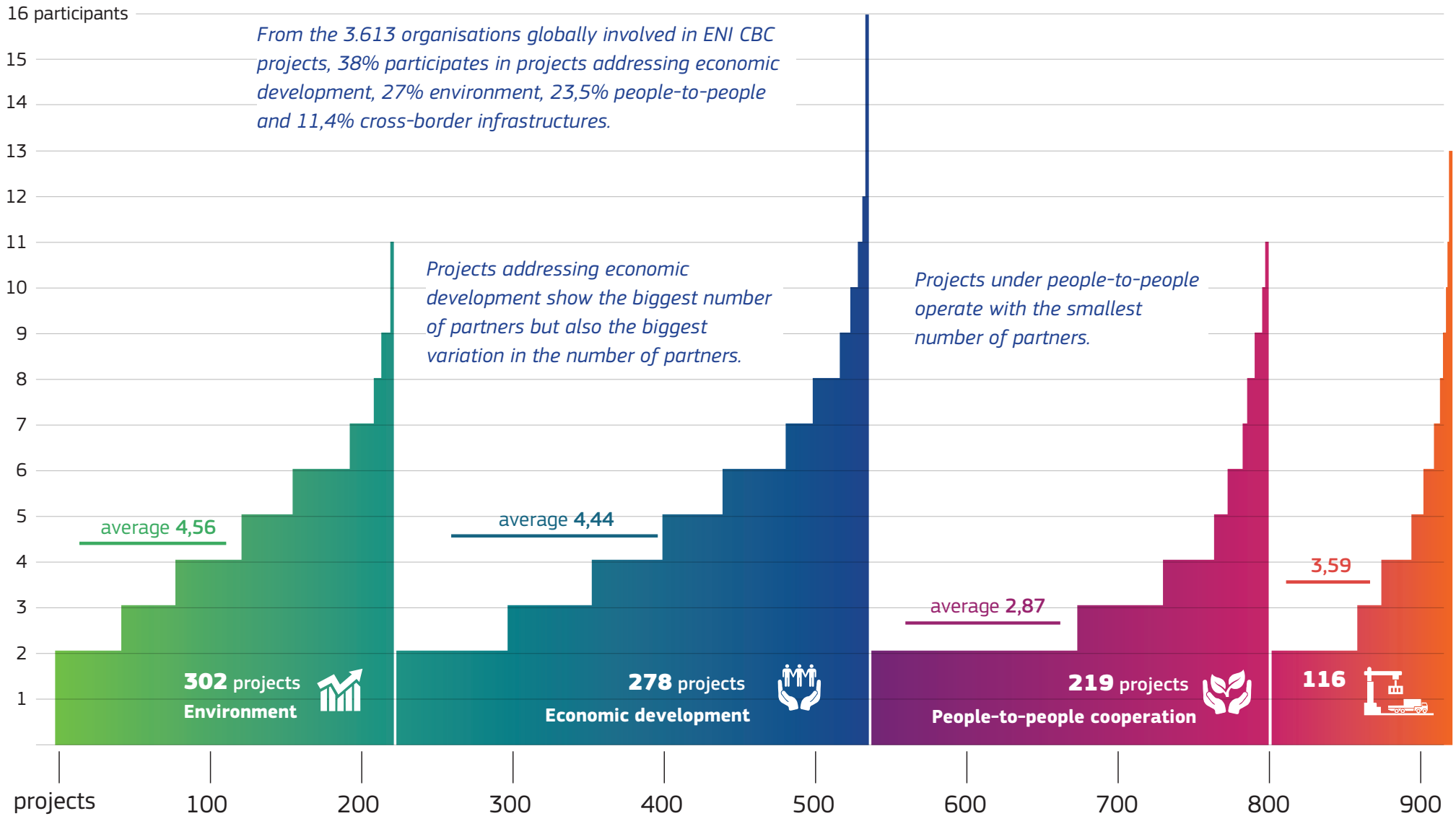
Which is the duration of the projects through the thematic clusters?

The variation in duration is less evident when we consider the thematic cluster addressed, although a shorter duration (21 months in average) is noted for people-to-people projects, partly due to the high number of micro-projects within this cluster.



Partners

Which is the number of partners involved in the projects?



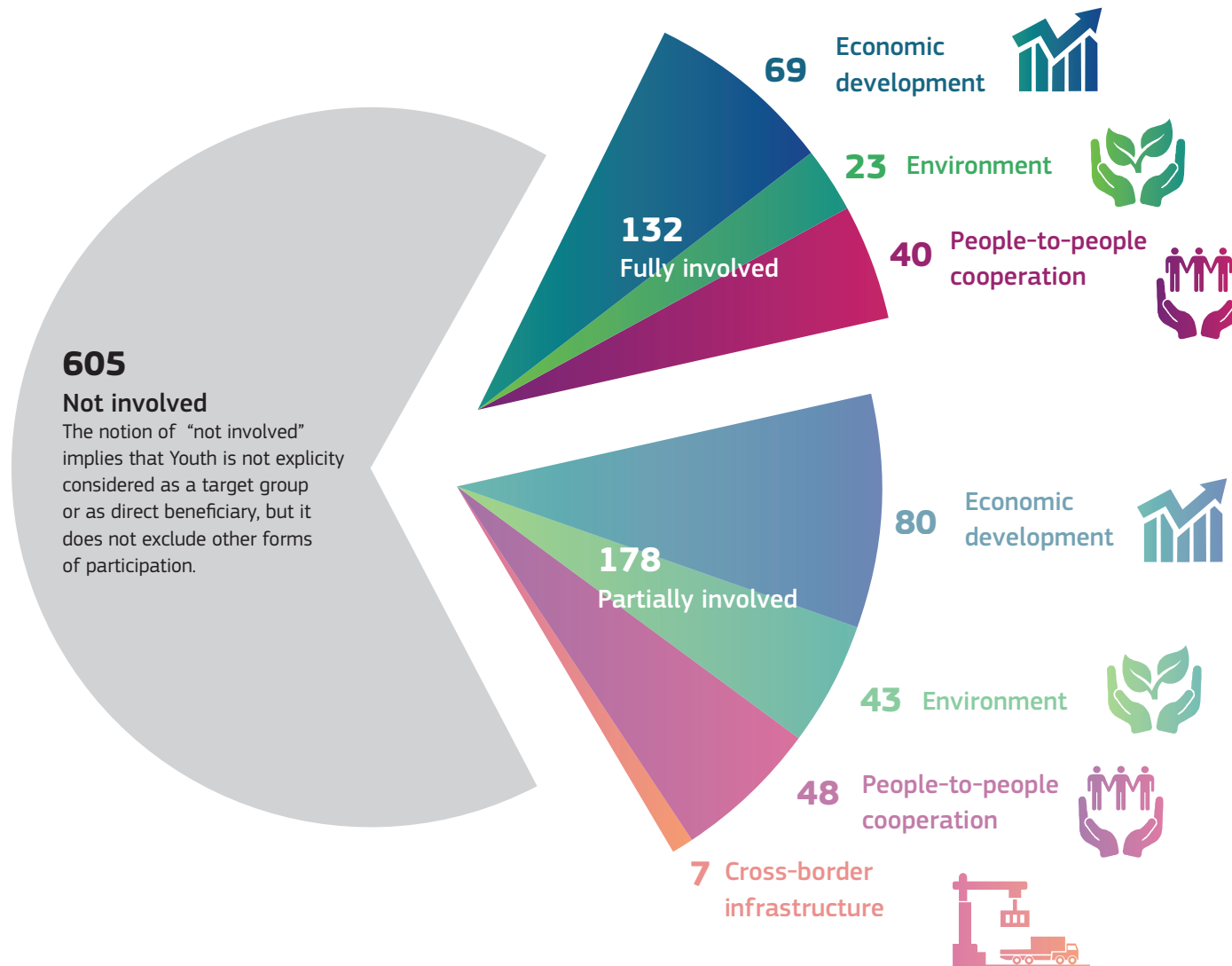
Youth involvement

Youth

How much is the Youth involved in the projects?

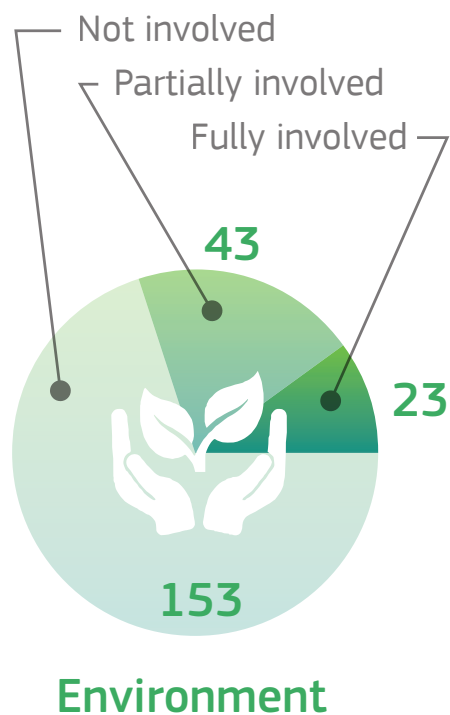
Around one third of all projects engage Youth. In general, there are more projects that address Youth as final beneficiary than projects where young people are a target group.

When fully involved, Youth is explicitly involved as target group for projects' activities, and sometimes as final beneficiary. In some cases, young people are also included in planning and decision taking. When partially involved young people are addressed as final beneficiaries and they might take part in some activities of the project, but they are not a direct target group.



Youth

Where is the Youth more involved through the thematic clusters?



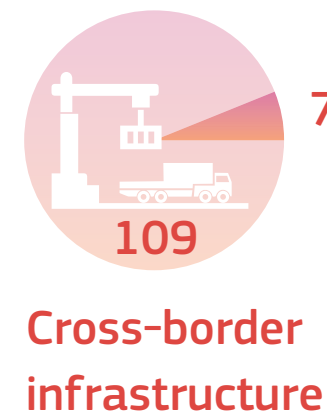
Economic development is a Youth-friendly cluster.



In the people-to-people cluster, we have an almost equal number of projects with full and partial Youth involvement.



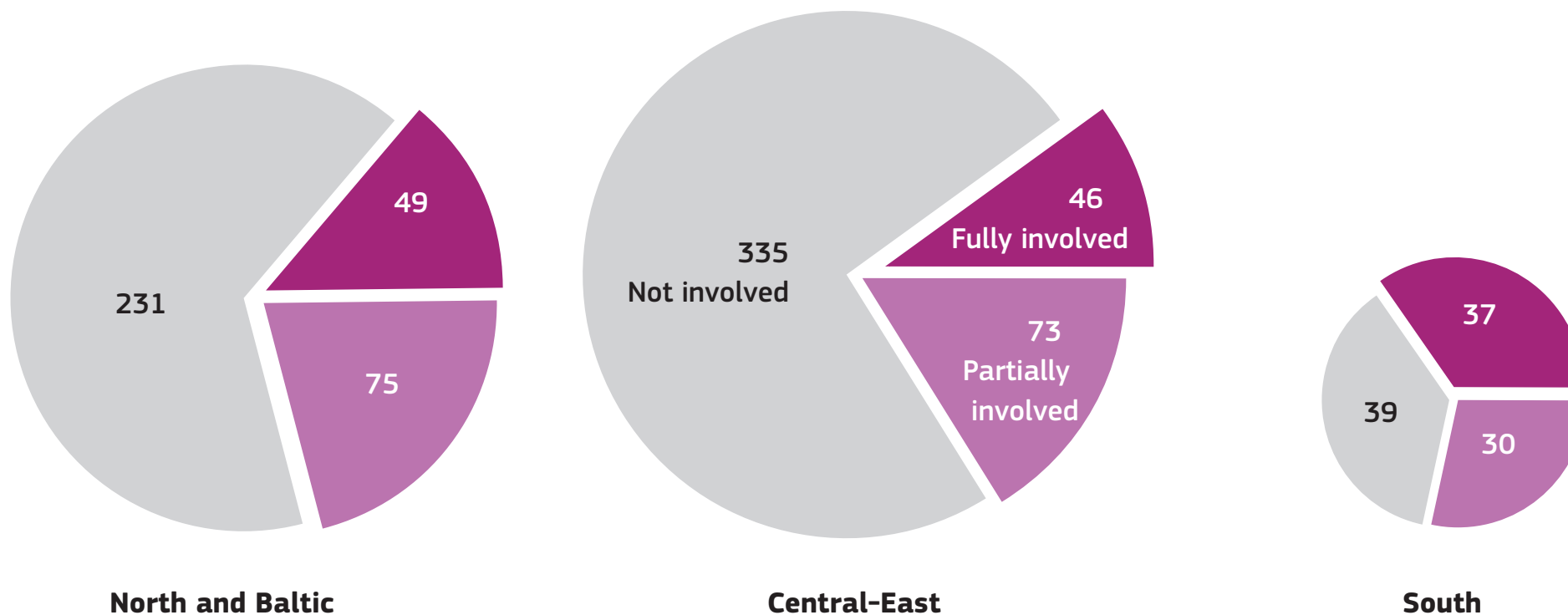
The involvement of Youth in projects dealing with cross-border infrastructure projects is the lowest.



Youth

Where is the Youth more involved across geographical areas?

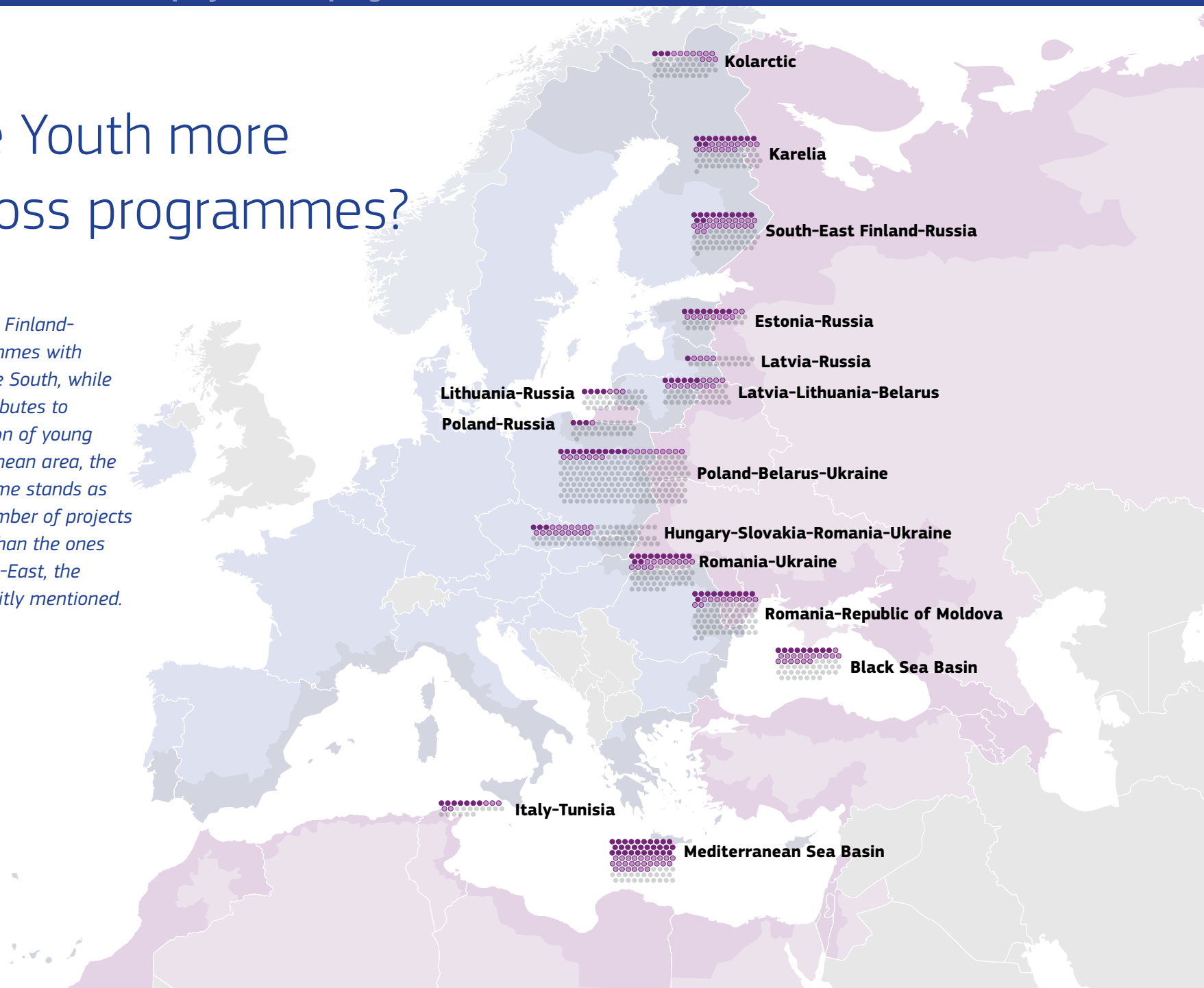
Due to the bigger number of projects, in the Central-East and North-Baltic geographical areas there are more projects with Youth involvement. In the North-Baltic and Central-East the partial involvement of Youth is more common than the full engagement, while in South it is the opposite, where 63% of all projects targets or involve Youth. Therefore, the share of projects with Youth engagement is higher in the South.



Youth

Where is the Youth more involved across programmes?

In the North and Baltic, South-East Finland-Russia and Karelia are the programmes with higher participation of Youth. In the South, while the Italy-Tunisia Programme contributes to raise the percentage of participation of young people in projects in the Mediterranean area, the Mediterranean Sea Basin Programme stands as the only programme where the number of projects with Youth participation is higher than the ones with no involvement. In the Central-East, the participation of Youth is less explicitly mentioned.



Young

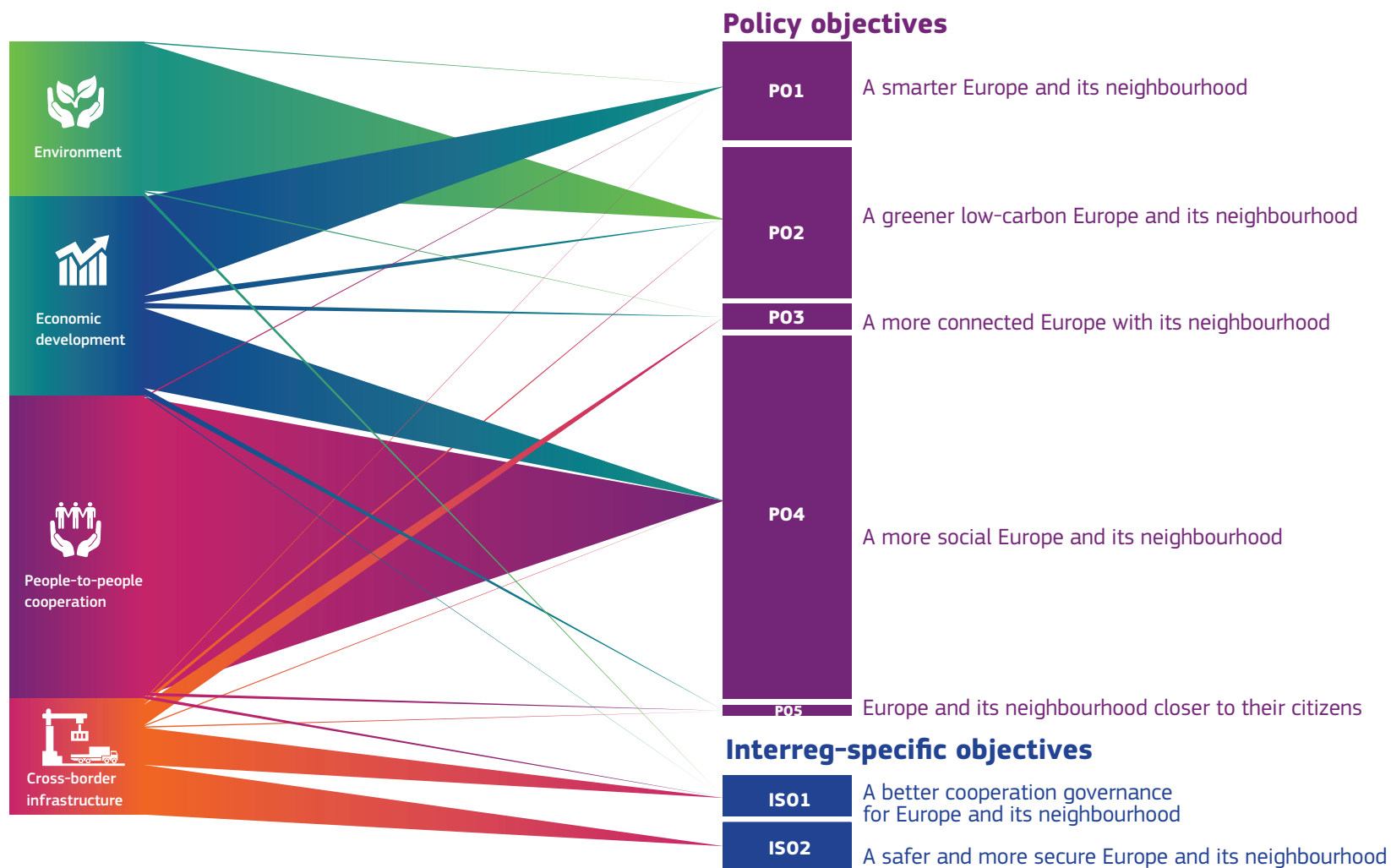
- Fully involved
- Partially involved
- Not involved

From ENI CBC to Interreg NEXT

Interreg NEXT

How do ENI CBC projects fit into Interreg NEXT?

We simulate here that the ENI CBC projects operate on the basis of the objectives for the programming period 2021-2027. The graph considers only seven Central-East and Southern Interreg NEXT programmes.



All ENI CBC projects show a high level of coherence and continuity with the 2021-2027 policy objectives and Interreg specific objectives.

P04, P02 and P01 are the policy objectives most covered by the ongoing projects.

P04 is the most covered, with 61% of the ENI CBC projects addressing culture and sustainable tourism.

40% of the projects belonging to the economic development cluster converges in P04, especially when they address job creation, inclusive economy and, again, the tourism sector.

Cross-border infrastructures is the cluster that has been more split into different POs and ISOs.

Do you want to know more?

Stay tuned and check tesim-enicbc.eu
for further thematic insights on the
ENI CBC projects and programmes.